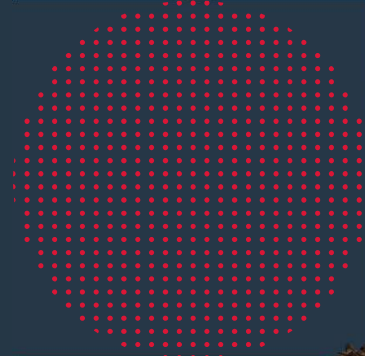
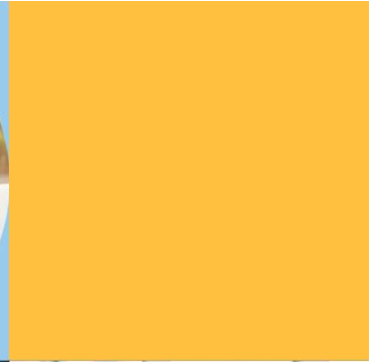




# Caltech

How to reset your password in your  
online account



# How to reset your password in your online account

Proprietary & Confidential



# Password Reset

## Login


**Existing User**

Username  [Forgot Username?](#)

Remember Me

**Next**

**Trouble accessing your account?**  
Get online account assistance to reset your username or password, set up a new account, or contact us if you have additional questions.



# Password Reset

Login


**Existing User**

Username [Change Account?](#)

Password  [Forgot Password?](#)

**Login**

**Trouble accessing your account?**  
Get online account assistance to reset your username or password, set up a new account, or contact us if you have additional questions.



A teal arrow points from the 'Forgot Password?' link to the 'Trouble accessing your account?' section.

# Password Reset

## Request Password Reset

 20%

Enter your username, last name and last 4 digits of your SSN. \*Required

Username \*

Last Name \*

Last 4 Digits of Your SSN \*

# Password Reset

## Verify Your Identity



40%

Your protection is important to us. We need to take some extra steps to verify your identity. Please confirm how you would like to proceed:

- Text Message** (\*\*\* ) \*\*\*-0000  
Text messaging rates may apply.  
View our [privacy policy](#) and [terms of service](#).  
1 message per attempt.
- Email** sS\*\*\*@\*\*\*.com
- Alternate Email** sS\*\*\*@\*\*\*.com

# Password Reset

## Verify Your Identity



50%

A passcode was sent to your mobile number: (\*\*\*) \*\*\*-0000

\*Required

Verification passcode: \*   View

If you did not receive the text message, or your passcode has expired, click on the link below to resend the passcode or contact your administrator.

[Resend passcode](#)

Next

# Password Reset

## Verify Your Identity

 60%  
Your protection is important to us. We need to take some extra steps to verify your identity. Please confirm how you would like to proceed:

- Security Questions
- Last 6 digits of primary account holder's benefits debit card

Next



# Password Reset

## Update Password



80%

**Enter your new password**

\*Required

New Password\*

Your password must contain at least eight characters, one upper case letter, one number and one special character. Special characters supported are ! @ # \$ % & \* ?. The letters in your password are case sensitive. Your password cannot be a previous password.

Confirm Password\*

Next

# Password Reset

## Password Reset Results



Your password has been changed.

Login

# Password Reset

## Login


**Existing User**

Username  [Forgot Username?](#)

Remember Me

**Next**

**Trouble accessing your account?**  
Get online account assistance to reset your username or password, set up a new account, or contact us if you have additional questions.



# Contact Participant Services

Our Participant Services team is available Monday through Friday, from 6 a.m. to 9 p.m. CT, except holidays.



## Live Chat

---

Log into your online account



## Website

---

[www.wexinc.com](http://www.wexinc.com)

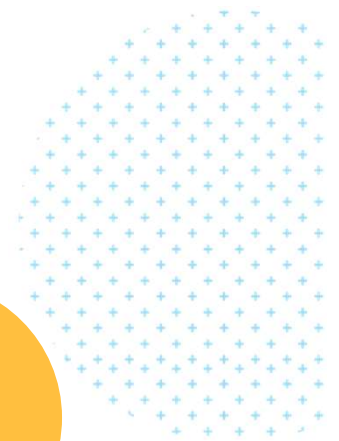


## Phone

---

**Current WEX participants:**

844-561-1334



wex™



Proprietary & Confidential